



## Thaw and Culture Details

Cell Line Name	<b>UCSD129i-75-1</b>
WiCell Lot Number	<b>WB54795</b>
Provider	University of California, San Diego – Dr. Kelly Frazer
Banked By	WiCell
Thaw and Culture Recommendations	WiCell recommends thawing 1 vial into 4 wells of a 6 well plate.
Culture Platform	Feeder Independent
	Medium: mTeSR™1
	Matrix: Matrigel®
Protocol	WiCell Feeder Independent mTeSR™1 Protocol
Passage Number	p20 These cells were cultured for 19 passages prior to freeze and post reprogramming. WiCell adds +1 to the passage number to best represent the overall passage number of the cells at thaw.
Date Vialied	13-December-2016
Vial Label	UCSD129i-75-1 p20 WB54795
Biosafety and Use Information	Appropriate biosafety precautions should be followed when working with these cells. The end user is responsible for ensuring that the cells are handled and stored in an appropriate manner. WiCell is not responsible for damages or injuries that may result from the use of these cells. Cells distributed by WiCell are intended for research purposes only and are not intended for use in humans.

## Testing Performed by WiCell

Test Description	Test Provider	Test Method	Test Specification	Result
Karyotype by G-banding	WiCell	SOP-CH-003	Expected karyotype	See Report
Post-Thaw Viable Cell Recovery	WiCell	SOP-CH-305	≥ 15 Undifferentiated Colonies, ≤ 30% Differentiation and recoverable attachment after passage	Pass
Identity by STR	UW Translational Research Initiatives in Pathology Laboratory	PowerPlex 16 HS System by Promega	Defines profile	Pass
Sterility	Steris	ST/07	Negative	Pass
Mycoplasma	WiCell	SOP-QU-004	Negative	Pass

## Testing Reported by Provider

The Provider stated that some or all of the additional analyses listed below may have been performed for this cell line. For more information, publication and dbGaP links, where available, are provided on the cell line specific web page on the WiCell website.

- Illumina® HumanCoreExome BeadChip Array
- RNA-Seq
- Flow Cytometry (SSEA-4, Tra 1-81)
- Infinium® Expanded Multi-Ethnic Genotyping Array (MEGA<sup>EX</sup>)



Approval Date	Quality Assurance Approval
04-January-2017	<p style="text-align: right;">10/25/2018</p> <p>X JKG</p> <hr/> <p><small>JKG Quality Assurance Signed by: Gay, Jenna</small></p>

**Date Reported:** Wednesday, August 22, 2018

**Cell Line Sex:** Female

**Cell Line:** UCSD129i-75-1-WB54795 13921

**Reason for Testing:** Lot release testing

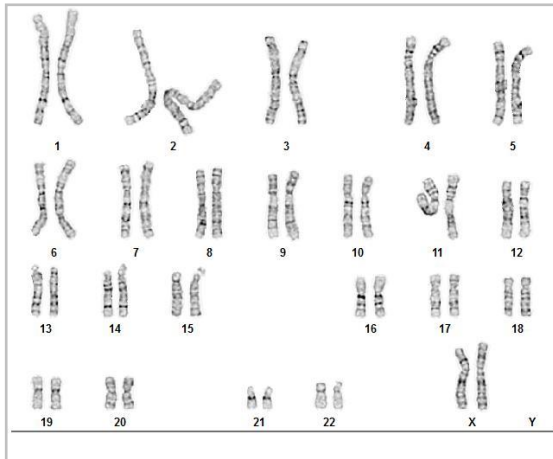
**Passage#:** 20

**Date of Sample:** 8/16/2018

**Investigator:** [REDACTED], WiCell

**Specimen:** Human IPS

**Results:** 46,XX



**Cell:** 20

**Slide:** G01

**Slide Type:** Karyotype

**Total Counted:** 20

**Total Analyzed:** 8

**Total Karyogrammed:** 4

**Band Resolution:** 425 - 550

### Interpretation:

**This is a normal karyotype; no clonal abnormalities were detected at the stated band level of resolution.**

**Completed by:** [REDACTED] CG(ASCP)

**Reviewed and Interpreted by:** [REDACTED], PhD, FACMG

A signed copy of this report is available upon request.

**Date:** \_\_\_\_\_ **Sent By:** \_\_\_\_\_ **Sent To:** \_\_\_\_\_ **QC Review By:** \_\_\_\_\_

*Limitations: This assay allows for microscopic visualization of numerical and structural chromosome abnormalities. The size of structural abnormality that can be detected is >3-10Mb, dependent upon the G-band resolution obtained from this specimen. For the purposes of this report, band level is defined as the number of G-bands per haploid genome. It is documented here as "band level", i.e., the range of bands determined from the four karyograms in this assay. Detection of heterogeneity of clonal cell populations in this specimen (i.e., mosaicism) is limited by the number of metaphase cells examined, documented here as "# of cells counted".*

*This assay was conducted solely for listed investigator/institution. The results of this assay are for research use only. Unless otherwise mutually agreed in writing, the services provided to you hereunder by WiCell Research Institute, Inc. ("WiCell") are governed solely by WiCell's Terms and Conditions of Service, found at [www.wicell.org/privacyandterms](http://www.wicell.org/privacyandterms). Any terms you may attach to a purchase order or other document that are inconsistent, add to, or conflict with WiCell's Terms and Conditions of Service are null and void and of no legal force or effect.*

**Sample Report:**

13921-STR

**Sample Name on Tube:** 13921-STR

74.0 ng/μL, (A260/280=1.84)

**Sample Type:** Cells**Cell Count:** ~2 million cells**Requestor:**

WiCell Research Institute

Quality Department

**Sample Date:** N/A**Receive Date:** 08/27/18**Assay Date:** 08/29/18**File Name:** STR 180830 wmr**Report Date:** 09/05/18

STR Locus	STR Genotype Repeat #	STR Genotype
FGA	16-18,18.2,19,19.2,20,20.2,21,21.2,22, 22.2, 23, 23.2, 24, 24.2, 25, 25.2, 26-30, 31.2, 43.2, 44.2,45.2, 46.2	Identifying information has been redacted to protect donor confidentiality. If more information is required, please, contact <a href="#">WiCell's Technical Support</a> .
TPOX	6-13	
D8S1179	7-18	
vWA	10-22	
Amelogenin	X,Y	
Penta_D	2.2, 3.2, 5, 7-17	
CSF1PO	6-15	
D16S539	5, 8-15	
D7S820	6-14	
D13S317	7-15	
D5S818	7-16	
Penta_E	5-24	
D18S51	8-10, 10.2, 11-13, 13.2, 14-27	
D21S11	24,24.2,25,25.2,26-28,28.2,29,29.2, 30, 30.2,31, 31.2,32,32.2,33,33.2, 34,34.2,35,35.2,36-38	
TH01	4-9,9.3,10-11,13.3	
D3S1358	12-20	

**Results:** Based on the 13921-STR cells submitted by WiCell QA dated and received on 08/27/18, this sample (Label on Tube: 13921-STR) defines the STR profile of the human stem cell line UCSD129i-75-1 comprising 25 allelic polymorphisms across the 15 STR loci analyzed.

**Interpretation:** No STR polymorphisms other than those corresponding to the human UCSD129i-75-1 stem cell line were detected and the concentration of DNA required to achieve an acceptable STR genotype (signal/noise) was equivalent to that required for the standard procedure (~1 ng/amplification reaction) from human genomic DNA. This result suggests that the 13921-STR sample submitted corresponds to the UCSD129i-75-1 stem cell line and was not contaminated with any other human stem cells or a significant amount of mouse feeder layer cells.

**Sensitivity:** Sensitivity limits for detection of STR polymorphisms unique to either this or other human stem cell lines is ~2-5%.



Digitally Signed on 09/06/18



Digitally Signed on 09/06/18

[Redacted], BA  
TRIP Laboratory, Molecular[Redacted], PhD, Director / Co-Director  
UWHC Molecular Diagnostics Laboratory / UWSMPH TRIP Laboratory

Testing was accomplished by analysis of human genetic polymorphisms at STR loci. This methodology has not yet been approved by the FDA and is for investigational use only.

Acknowledge TRIP in your publications, posters & presentations. For details, see: <http://www.pathology.wisc.edu/research/trip/acknowledging>TRIP agrees to maintain the confidentiality of any information provided to it in connection with its performance of this STR analysis on the same conditions as set forth in paragraph 2 of WiCell's Terms and Conditions of Service (<http://www.wicell.org/media.acux/1a429b84-2b54-44a4-8ad8-5c05db93dd8a>).

# Native Product Sterility Report



WiCell  
504 S. Rosa Rd., Rm 101  
Madison, WI 53719

SAMPLE #: 18020291  
DATE RECEIVED: 06-Feb-18  
TEST INITIATED: 07-Feb-18  
TEST COMPLETED: 21-Feb-18

SAMPLE NAME / DESCRIPTION: CREM015i-SS16-1 WB66723 13311, CREM016i-SS18-1 WB66712 13312, CREM019i-SS25-1 WB66728 13313, CREM021i-SS29-1 WB66729 13314, H9-SOX2-GFP WB66727 13315, WCO05i-FX11-7 WB20338 13316, WCO09i-FX08-01 WB17924 13317, PENN015i-668-5 DB36410 13318, PENN029i-752-3 DB36392 13319, PENN009i-57-52 DB35131 13320, PENN034i-322-1 DB34729 13321, PENN077i-521-1 DB36597 13322, PENN125i-233-4 DB35073 13323, PENN136i-262-1 DB35081 13324, UCSD048i-52-1 WB66722 13325, UCSD208i-111-1 WB66730 13326, UCSD133i-79-1 WB61228 13327, UCSD152i-11-3 WB61663 13328, UCSD168i-22-1 WB61577 13329, UCSD170i-22-3 WB60774 13330, UCSD175i-18-3 WB60837 13331, UCSD066i-67-1 WB60392 13332, UCSD099i-35-2 WB65030 13334, UCSD117i-72-1 WB60039 13335, UCSD119i-38-2 WB60256 13336, UCSD125i-7-2 WB59219 13337, UCSD128i-7-5 WB60297 13338, UCSD151i-11-2 WB59218 13339, UCSD158i-12-4 WB60020 13340, UCSD088i-6-5 WB53942 13341, UCSD147i-10-2 WB54174 13342, UCSD167i-99-1 WB54407 13343, UCSD198i-23-1 WB54163 13344, UCSD098i-35-1 WB55340 13345, UCSD100i-36-1 WB55460 13346, UCSD129i-75-1 WB54795 13347, UCSD136i-82-1 WB54902 13348, UCSD139i-85-1 WB55345 13349, UCSD173i-18-1 WB54899 13350, UCSD187i-104-1 WB55339 13351, UCSD206i-31-1 WB54794 13352, UCSD217i-115-1 WB55069 13353, UCSD218i-116-1 WB55459 13354, UCSD094i-25-1 WB55177 13355, UCSD095i-25-2 WB57580 13356, UCSD097i-34-2 WB57100 13357, UCSD113i-68-1 WB57056 13358, UCSD115i-70-1 WB55081 13359, UCSD184i-8-1 WB55338 13360, UCSD188i-105-1 WB55082 13361

UNIQUE IDENTIFIER:

NA

PRODUCT REGISTRATION:

Other: Human iPS cells

TEST RESULTS:

# Tested	# Positives (Growth)	- Control
50	0	3 Negative

TEST SUMMARY:

# Samples	Media Type	Volume (mL)	Incubation Temperature (° C)	Incubation Duration (Days)
50	TSB	40	20-25	14
50	FTG	40	30-35	14

REFERENCE:

Processed according to LAB-003: Sterility Test Procedure

METHOD VALIDATION / PD #:

000053

TEST METHODOLOGY:

USP - Direct Transfer

# Native Product Sterility Report



COMMENTS: Sample # 18020291

REVIEWED BY 

DATE 22 FEB 18

Specific test results may not be indicative of the characteristics of any other samples from the same lot or similar lots. This test report shall not be reproduced, except in full, without prior written approval. Liability is limited to the costs of the tests.



# Mycoplasma Detection Assay Report

Testing Performed by WiCell

Lot Release Testing

August 16, 2018

FORM SOP-QU-004.01

Version G Edition 02

Reported by: AP

Reviewed by: JB

BD Monolight 180

#	Sample Name	Reading A			Reading B			Ratio B/A	Result	Comments/Suggestions
		RLU1	RLU2	Ave	RLU1	RLU2	Ave			
1	UCSD129i-75-1-WB54795 13921	260	265	262.5	93	97	95	0.36	Negative	
2	Positive (+) Control	486	434	460	19592	19817	19705	42.84	Positive	
3	Negative (-) Control	896	897	896.5	94	87	90.5	0.10	Negative	

